

The PHDP gerotor hydraulic motor is a high-performance hydraulic motor that is compact, lightweight, and designed to deliver reliable and efficient operation in a wide range of applications. Its unique gerotor design provides high torque output, making it ideal for heavy-duty applications such as construction equipment, forestry machinery, and agricultural machinery.

The motor is available in various sizes and configurations, making it customizable to suit different applications. It is compatible with a range of hydraulic fluids, including mineral oil, biodegradable oil, and synthetic oil. Its rugged construction ensures long-lasting durability and reliable performance in even the toughest conditions.

The PHDP gerotor hydraulic motor is a reliable and efficient choice for anyone seeking a high-performance hydraulic motor that provides smooth, precise control and long-lasting durability in a wide range of applications.

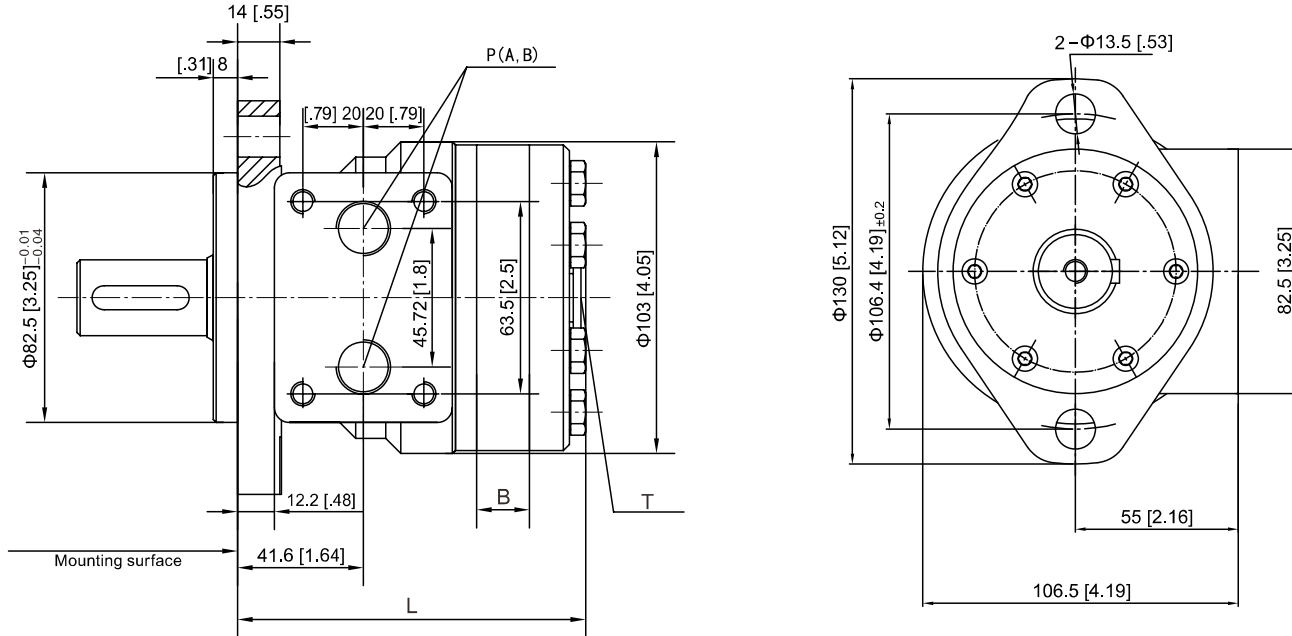
MAIN SPECIFICATIONS

		PHDS 50	PHDS 80	PHDS 100	PHDS 125	PHDS 160	PHDS 200	PHDS 250	PHDS 315	PHDS 400
Displacement	[in ³ /rev.] cm ³ /rev.	51.7 [3.15]	80.5 [4.91]	100.5 [6.13]	126.3 [7.71]	160.8 [9.81]	200.9 [12.26]	252.6 [15.41]	321.5 [19.62]	401.9 [24.52]
Max.Pressure.Drop	cont. bar [psi]	140 [2030]	140 [2030]	140 [2030]	140 [2030]	140 [2030]	125 [1812]	110 [1595]	90 [1305]	70 [1015]
	int. bar [psi]	175 [2538]	175 [2538]	175 [2538]	175 [2538]	175 [2538]	155 [2248]	140 [2030]	110 [1595]	90 [1305]
	peak. bar [psi]	200 [2900]	200 [2900]	200 [2900]	200 [2900]	200 [2900]	180 [2610]	160 [2320]	130 [1885]	110 [1595]
Max.Torque	cont. n.m [Lb.in]	93 [823]	152 [1345]	194 [1717]	237 [2097]	310 [2743]	320 [2832]	380 [3363]	380 [3363]	380 [3363]
	int. n.m [Lb.in]	118 [1044]	189 [1672]	236 [2088]	296 [2619]	378 [3345]	398 [3522]	470 [4159]	470 [4159]	470 [4159]
	peak. n.m [Lb.in]	135 [1194]	216 [1911]	270 [2389]	338 [2991]	433 [3832]	460 [4071]	540 [4779]	540 [4779]	540 [4779]
Max.Speed	cont. r/min	770	745	595	475	370	295	235	185	150
Max.Flow	cont. L/min [G/min]	40 [10.57]	60 [15.85]	60 [15.85]	60 [15.85]	60 [15.85]	60 [15.85]	60 [15.85]	60 [15.85]	60 [15.85]
Max.Output.Power	cont. kw [hp]	7 [9.39]	10 [13.41]	10 [13.41]	10 [13.41]	10 [13.41]	7 [9.39]	6 [8.05]	5 [6.70]	4 [5.36]

Intermittent operation the permissible values may occur for max. 10% of every minute
Peak load: the permissible values may occur for max. 1% of every minute

DIMENSIONS AND MOUNTING

A2 : 2- Φ [.53] Hole oval flange
 2- Φ 13.5 Hole oval flange



PHDS

	PHDS-50	PHDS-80	PHDS-100	PHDS-125	PHDS-160	PHDS-200	PHDS-250	PHDS-315	PHDS-400
L	107 [4.21]	112 [4.41]	115.5 [4.55]	120 [4.72]	126 [4.96]	133 [5.24]	142 [5.59]	154 [6.06]	168 [6.61]
B	9 [.35]	14 [.55]	17.5 [.69]	22 [.87]	28 [1.10]	35 [1.38]	44 [1.73]	56 [2.20]	70 [2.75]

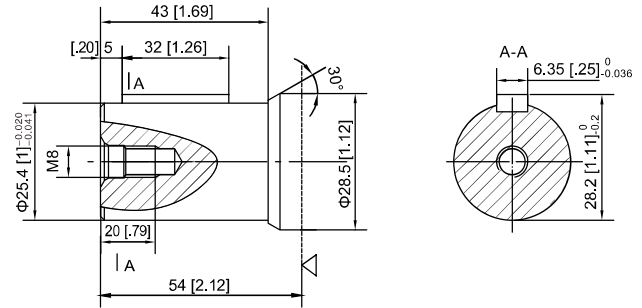
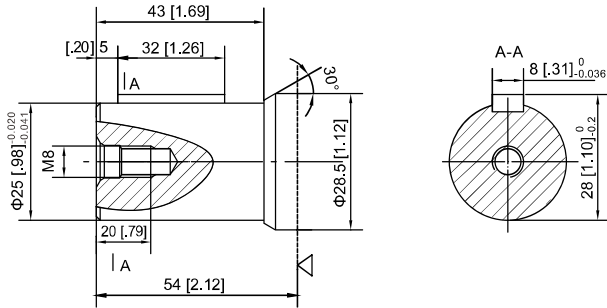
PHDS WITH SPOOL VALVE PORT CODES

Port Codes	Ports (A,B)	Mounting Thread (C)	Drain Connection (T)
Y	G1/2 (15)	M8 (13)	M14x1.5 (12)
Y1	M18x1.5 (15)	M8 (13)	M14x1.5 (12)
Y2	M22x1.5 (15)	M8 (13)	M14x1.5 (12)
Y9	NPTF1/2 (15)	5/6-18UNC (13)	7/16-20UNF (12)
Y10	G1/2 (15)	M8 (13)	G1/4 (12)
Y15	7/8-14UNF (15)	5/6-18UNC (13)	7/16-20UNF (12)

Note: P (A,B)---Ports , C---Mounting Thread(-- Indicates no thread) , T--Drain Connection

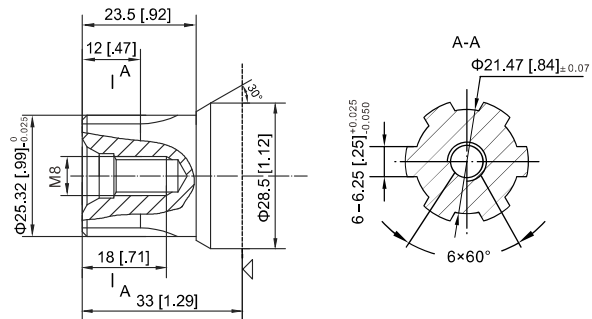
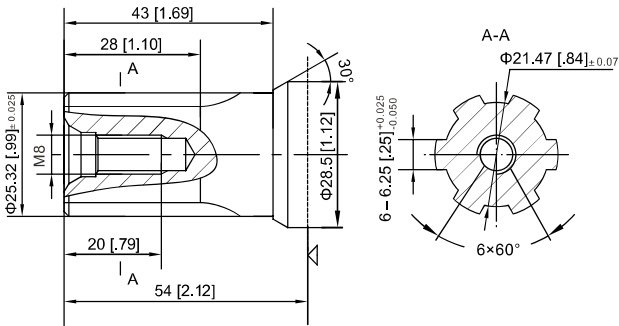
P1 : Φ [.98] Cylindrical shaft, parallel key [.31] x [.27] x [1.26]
 Φ 25 Cylindrical shaft, parallel key 8x7x32

P3: Φ [1] Cylindrical shaft, parallel key [.25] x [.25] x [1.26]
 Φ 25.4 Cylindrical shaft, parallel key 6.35x6.35x32



H3 : Φ [.99] Splined shaft, 6 – [.99] x [.84] x [.25]
 Φ 25.3 Splined shaft, 6–25.32 x 21.47 x 6.25

H5 : Φ [.99] Splined shaft, 6 – [.99] x [.84] x [.25]
 Φ 25.3 Splined shaft, 6–25.32x21.47x6.25





PHDS WITH SPOOL VALVE ORDERING CODE

1	2	3	4	5	6	7
PHDS	—				—	—

Pos.1	2	3		4		5		6		7			
Series	Disp	Output		Flange		Code	Ports(A,B)(deep)	Drain port T(deep)	Special features		Rotation direction		
PHDS	50 80	P1	Φ[.98] Cylindrical shaft, parallel key [.31] x [.27] x [1.26] Φ 25 Cylindrical shaft, parallel key 8x7x32		A2	2-Φ[.53] Oval flange, pilot Φ[3.25] x [.31] 2-Φ13.5 Oval flange pilot Φ82.5 x 8	Y	G1/2 (15)	M14x1.5 (12)	Omit	Standard	Omit	Standard
	100 125	P3	Φ[1] Cylindrical shaft, parallel key [.25] x [.25] x [1.26] Φ 25.4 Cylindrical shaft, parallel key 6.35x6.35x32				Y1	M18x1.5 (15)	M14x1.5 (12)				
	160 200	H3	Φ[.99] Splined shaft, 6- [.99] x [.84] x [.25] Φ25.3 Splined shaft, 6-25.32x21.47x6.25				Y2	M22x1.5 (15)	M14x1.5 (12)				
	250		Y9	NPTF1/2 (15)			7/16-20UNF (12)						
	315 400	H5	Φ[.99] Splined shaft, 6- [.99] x [.84] x [.25] Φ25.3 Splined shaft, 6-25.32x21.47x6.25				Y10	G1/2 (15)	G1/4 (12)				
			Y15	7/8-14UNF (15)			7/16-20UNF (12)	L	Opposite				